

VERSION COMPARISON

MapInfo® Professional v11.0

SAVE TIME, MONEY, AND RESOURCES WITH THE PREMIER LOCATION INTELLIGENCE SOLUTION



Summary

MapInfo Professional v11.0 is a powerful Microsoft Windows-based mapping application that allows business analysts and GIS professionals to easily visualize the relationships between data and geography. MapInfo Professional is an industry leader in usability and it is part of a comprehensive integrated location platform. With Premium Services and out of the box connectivity to MapInfo Manager's data management capabilities, it continues to set the standard for effective spatial data creation, editing and analysis.

HOW DOES v11.0 COMPARE TO PREVIOUS VERSIONS?

MAPINFO PROFESSIONAL v11.0 ADDS:

Re-designed Browser Window

- Increased day-to-day productivity in many common operations.
- Easily Sort up to four columns for a table or query
- Column width automatically set to content length
- Multi line support (for Browser and Labels)
- Easily set font and style options for any browser window
- Better selection visibility
- Multi record select via click and drag
- Easy data/cell navigation and editing options
- Ability to perform Undo/Redo operation multiple times at cell level
- Support for Windows themes/skins/colors

Enhanced support of 64 Bit Operating Systems:

- **Perform Memory Intensive Operations:** MapInfo Professional v11.0 will automatically detect and use up to 4GB of memory. Operations such as large object processing tasks, grid, excel and raster data loading can now work with twice the amount of data without memory limitations.

Updated Preferences Dialog

- More intuitive grouping of options for better navigation
- New Browser Preferences dialog
- New alternate row color setting

Open MWS map data in MapInfo Professional

- Share workspaces with MapInfo web based solutions and MapXtreme applications.
- Support for multiple map windows, styles, thematic layers and legends

New MapCAD Tools

- Scale objects
 - Scales geographic objects by a specified factor
- Orthogonal Points
 - Position points orthogonal to a reference line
- Measurement Line
 - Generates measurement lines with cumulated distance and distance to objects

Integration and Data Management with MapInfo Manager

- Search, browse and open data using the CSW catalog service

MapInfo® Professional v11.0

- Fast and convenient access to table metadata from Layer Control and the Table List window
- Ability to add tables to MapInfo Manager Library

Microsoft Bing Premium Services*

- **Bing Road Tile:** opt for additional functionality gaining access to Bing's latest Road Tile data
- **Move Map to:** option to center a map around a place name (gazetteer) or an address
- **OSM Road Tile:** New Open Street Maps Road tile layer

Data Base Connectivity

- **ODBC Drivers:**
 - Microsoft SQL Server 2005
 - Microsoft SQL Server 2008 Native Client
 - Oracle ODBC Driver 11.2
 - PostgreSQL ANSI ODBC driver 8.x
- **Oracle OCI Client:**
 - Oracle Instant Client version 11.2.0.1.0

• Database Servers:

Spatial:

- SQL Server 2005 with SpatialWare 4.9
- SQL Server 2008
- Oracle Spatial 11Gr2, 10Gr2.
- PostgreSQL 8.3 with PostGIS v1.3
- PostGIS v9.0 with PostGIS v1.5.2

XY:

- Microsoft Access 2007, 2010
- Microsoft SQL Server 2005
- Microsoft SQL Server 2008 XY on a spatialized DB
- Oracle Spatial 10Gr2, 11Gr2

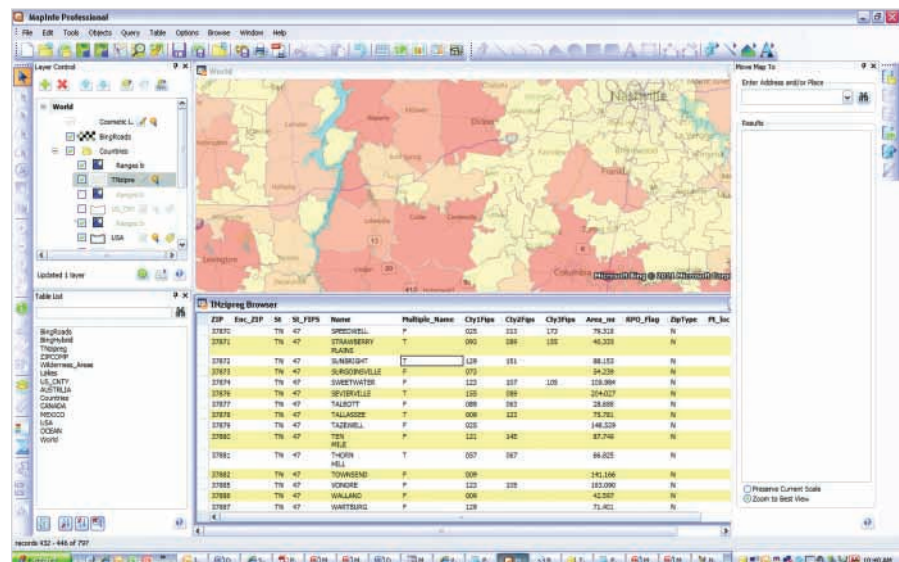
Operating Systems

• Desktop:

- Windows XP SP3 (Required)—for .NET 4.0
- Windows 7 Ultimate SP1
- Windows 7 Ultimate 64-bit SP1 with 32-bit compatibility mode

• Server:

- Windows 2008 Server 64 Bit SP2
- Windows 2008 R2 64 bit SP1
- Windows 2008 (64 Bit) Server SP2 with XenServer (a.k.a. Citrix)



The new Browser Windows greatly improve data readability by automatically adjusting column width to content, using alternating row colors and supporting multi line text.

* Premium services available at additional cost

MAPINFO PROFESSIONAL v10.5 ADDED:

METADATA BROWSER

- Search OGC compliant CSW catalogs within your organization or from around the world
- Access the PBBI Worldwide Data Catalog
- Refine search using existing Map window
- Launch multiple searches against multiple servers
- Add files to your map from catalog entries when exposed as: File path; Zip File; WMS; WFS; Tile Server; ...when available

DATA ACCESS

- Google KML & KMZ
- Tile Server data services
- Microsoft® Bing™ Maps

IMPROVED EASE OF USE

- Enhanced Toolbars and cursors—improves ease of use and ease of learning
- Toolbar locations from 3rd party applications are remembered from session to session
- New Icons for MapCAD tools
- One click PDF output
- New toolbar icons for quickly adding Microsoft's Bing Aerial and Bing Hybrid imagery to your maps
- Enhanced Docking—speeds up user operations
- Dockable Table List window for easy access to apply commonly used capabilities on any table.
- Dockable Named views window
- Dockable Metadata Browser
- Visual Docking guides for easy docking options
- Support for MBX generated window docking
- Table List Window
- View all open tables (whether mappable or not)
- Use dynamic search bar to quickly find the tables you need.
- Drag and drop tables into maps to quickly add data to existing maps
- Drag tables to an empty spot to create new maps
- Right click on tables to: Select all, Export, View/Update Table Structure, Create Points, or Update a table's column value
- Select one or more tables to: Add to an existing map, create a new map, browse or close the tables at once
- Use MapBasic to modify the menu and add or remove commands
- Layer Control Improvements:
- Right click to Browse table
- Right click to Add style override

- Right click to Add label override
- Drag one or more style or label override from one layer to another
- Drag style override from one map to another
- Enhanced Named Views Utility
- Added toolbar docking persistence support
- Dockable named views window
- Enhanced Sync Windows Utility—toolbar icon added for one click synchronization

BETTER LOOKING MAPS

- Built-in worldwide Aerial and Hybrid imagery
- Stacked style support (create new map object styles on the fly)
- Multi-zoom style and label support for easier map creation and less cluttered layer control

OUTPUT—SHARING YOUR MAPS

- Support for standard PDF
- Support for layered PDF
- Support for Geo-registered PDF
- Support for PDF with attributes
- Support for publishing maps to PBBI web-mapping in the cloud

MAPBASIC

- Support for creating new Tile Server Table
- Support for saving toolbar docking location
- Support for multi-style and label override
- Support for configuring/enhancing right-click context menu for Table List and Layer Control
- Support for browsing table from Layer Control
- Support for enabling custom dialog docking
- Support for windows docking and persisting docked states for future sessions

SUPPORTED OPERATING SYSTEMS

Desktop Operating Systems:

- Windows® 7 Ultimate
- Windows® 7 Ultimate 64-bit with 32-bit compatibility mode
- Windows® Vista Ultimate SP1
- Windows® XP Professional SP3

Server Operating Systems

- Windows® 2008 Server
- Windows® 2008 Server with Citrix® XenApp 5.5 (this is the new name for Citrix® Presentation Server)
- Windows® 2008 Server R2 64-bit with Citrix® XenApp 6.0

MapInfo® Professional v11.0

MAPINFO PROFESSIONAL v10.0 ADDED:

UNITED STATES

One Global View
Troy, NY 12180

1.800.327.8627

pbbi.sales@pb.com
www.pbinsight.com

CANADA

26 Wellington Street East
Suite 500

Toronto, ON M5E 1S2

1.800.268.3282

pbbi.canada.sales@pb.com
www.pbinsight.ca

EUROPE/UNITED KINGDOM

Minton Place
Victoria Street
Windsor, Berkshire SL4 1EG

+44.1753.848200

pbbi.europe@pb.com
www.pbinsight.co.uk

ASIA PACIFIC/AUSTRALIA

Level 7, 1 Elizabeth Plaza
North Sydney NSW 2060

+61.2.9437.6255

pbbi.australia@pb.com
pbbi.singapore@pb.com
www.pbinsight.com.au

EASE OF USE/USER INTERFACE

- New Menu and ToolBars
- New Layer Control
 - Modeless layer control
 - Interactive Style swatches
 - Multiple layers operations
 - Layers from different maps can be manipulated
 - Layer Control offers Pause/Resume option
 - Group Layers—Ability to add Group layers is available
 - Tool-tips show file path +name + zoom range

DATA ACCESS

- MS Office 2007 Support
- MS SQL Server 2008 spatial read/write
- PostGIS Read/Write

ENHANCED ANALYSIS/NEW TOOLS

- Calculate and append proportion overlap. Uses:
 - **Retail:** Ability to quickly calculate total population of a drive time based on proportional coverage of a another area with that data
 - **Telco:** Ability to quickly calculate any demographic value based on a coverage signal

PROJECTIONS ADDED

- Ministry of Transport of Quebec Coordinate Systems
- Support for the Popular Visualization CRS/ Mercator coordinate reference system used in Microsoft Virtual Earth and Google Maps
- Added USNG—Ability to display, center the map or populate points in USNG coordinates

MAPBASIC

- Support for Microsoft Office 2007 Access and Excel
- USNGToPoint(string)
- PointToUSNG\$(obj, datumid)
- Create Adornment Statement
- Set Adornment Statement
- GroupLayerInfo function
- LayerListInfo function
- Enhanced Functions
 - WindowInfo() function
 - Server ConnectionNumber
 - Set Map statement